

Pisgah Hill Campaign Committee

Mark Power, Chair

Anne McCormack

Fred Fauver

Rosemary Whitney

Eugenie Francine

Gro Flatebo

Charlie Woodworth

Henry Nichols



Walk with Us

The Pisgah Hill Campaign Committee leads walks to show the project area to community members. These visits usually last 1.5 hours and are the only way to see the beauty of this special place. Please contact us if you are interested in joining us so we may obtain permission from the project landowners. We love to show this wonderful project..

Relevant Facts

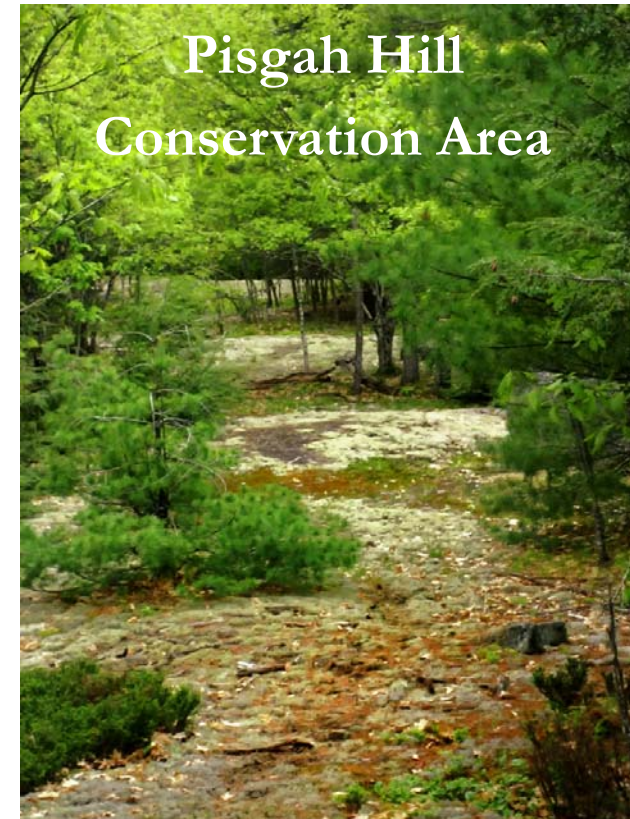
- New Gloucester is within 20 miles of three of Maine largest urban centers and will always be an attractive place to settle, forever changing its rural character.
- In the next 30 years, New Gloucester's population is projected to grow by 66%.
- Less than 5 % of New Gloucester's 30,592 acres are permanently conserved and open for public use.
- New Gloucester's Comprehensive Plan calls for the town and the land trust to: "Acquire ownership or protective easements on trails and significant open space."
- The Land for Maine's Future has pledged, as a matching grant, \$266,000, to the Pisgah Hill Project.
- Pisgah Hill and the surrounding area provide habitat to a variety of large and small mammals. This kind of place is disappearing in our region due to suburban growth.



Dedicated to working with landowners and Royal River communities to conserve and connect important working landscapes, habitat, riparian areas, and open space for people, wildlife, water quality and the future.

P.O. Box 90
Yarmouth, Maine 04096
207-847-9399
hnichols@rrct.org
www.rrct.org

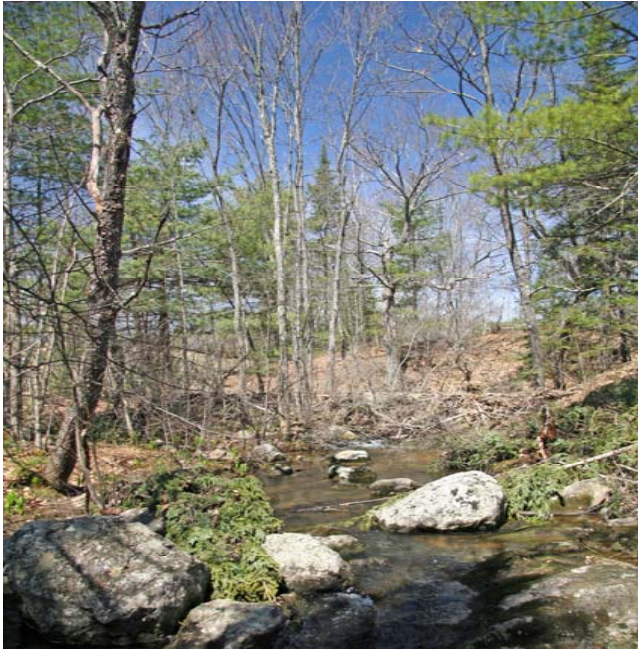
Pisgah Hill Campaign Committee
207-926-4876
mpower@trane.com



***An Outstanding Opportunity
for an
Exceptional
Community Resource
Enhancing New Gloucester's
Rural & Natural Heritage***

The Pisgah Hill Conservation Area will:

- set aside over 240 acres of prime wildlife habitat including several deer wintering areas
- ensure continued traditional uses and public access
- connect to the Bradbury to Pineland trail network and conservation lands
- secure parcels at the heart of a larger block of undeveloped land
- conserve one of New Gloucester's highest points and an historic site
- provide a outdoor classroom to area students



Act now! This Opportunity Will Expire Soon

Royal River Conservation Trust (RRCT), the local land trust, has exclusive options to purchase several key parcels in the project area until August 2010. If RRCT is unable to exercise these options, the land-owners will likely seek alternatives in the open market.

Join Your Friends and Neighbors

For every dollar that the Pisgah Hill Campaign Committee raises locally, RRCT is pledging to contribute \$4 raised from state/federal programs and private foundations. So far (as of April 30th), we have raised 19% of our \$94,000 local goal in pledges and donations thanks to several generous area families.

This kind of opportunity to leverage non-local sources of funds for conservation does not come around often.

Please help make a difference!
Pledge a donation today!



“The Pisgah Hill conservation project is a wonderful opportunity to enhance the quality of

life in New Gloucester for all

residents. Please join me in ensuring that future generations will be able to enjoy this special place.” - Lisa Bowie-Wallace

